



STARLED5 NX+ STARLED5 NX



LED LAMP FOR OPERATING ROOM

STARLED5 NX

Evolution, accuracy and reliability in the operating room



With its constant attention to the evolution of technology and clinical needs and aware of the responsibility of operating in a sector of such importance as the medical one, ACEM Medical Company (Division of ACEM SpA) is considered a partner for surgeons and medical staff in the OR. STARLED5 NX, surgical lamp with LED technology, is born to meet the needs of its user granting optimal performances, reliability and visual comfort.

COLD LIGHT FOR YEARS

LED technology for exclusive performances



STARLED5 NX boasts an excellent light quality. The special optics of its LEDs, realized by ACEM, generates a shadowless, clear and homogeneous light assuring visual comfort and best working conditions both for the surgeon and for the medical staff.

Thanks to its next generation LEDs, the lamp can produce a perfect illumination under every condition generating a IR-free light, an excellent colour temperature and a practically endless life cycle at low consumptions.



The 43 LEDs which make the STARLED5 NX are circularly positioned and divided into 5 reflectors (with 7 LEDs each one) and other 8 LEDs are radially placed around the handle. The lamp produces in this way a high illumination level of 130.000 lux (160.000 lux optional) for a steady life cycle of about 50.000 hours.

ACRIS is the extraordinary and innovative system realized by ACEM that ensures, by the use of a microprocessor, the control of electrical curves typical of LEDs to remain unaltered over the time but maintaining a long life cycle. The colour rendering index of STARLED5 NX is 95 and its colour temperature 4.500°K. These two values allow to reproduce the exact chromatic scale of the colours of the human body.



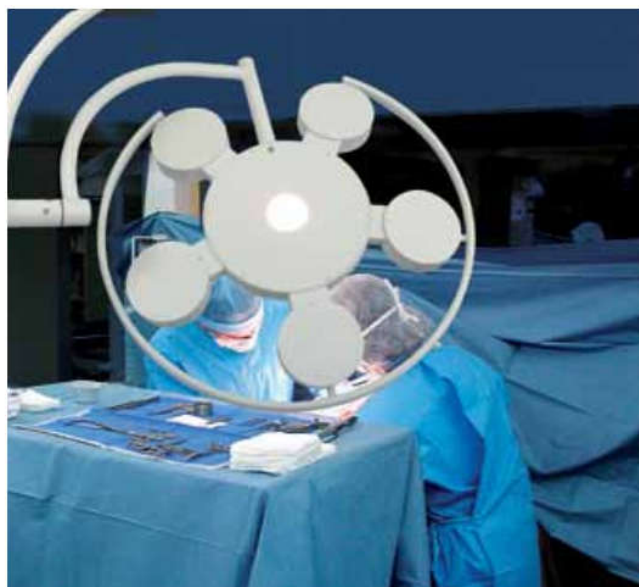
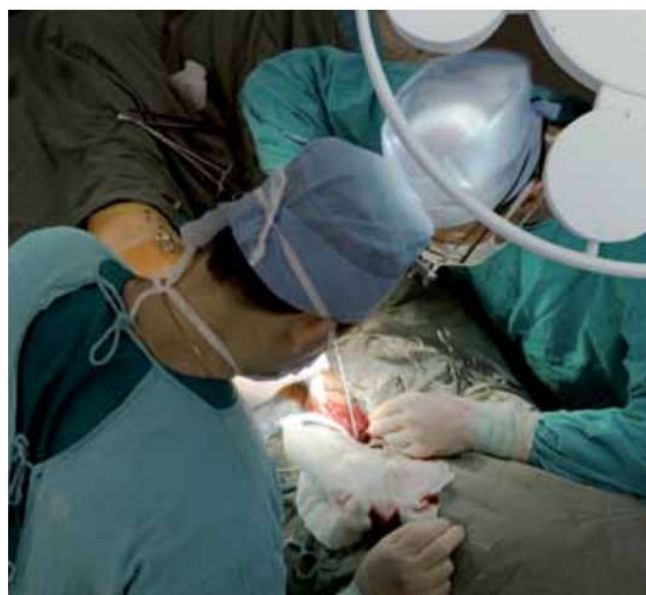
STARLED5 NX assures:

- high quality illumination level for each kind of surgery
- colour temperature of 4.500 °K which represents the contrast of the surgical area perfectly
- clear luminosity at 130.000 lux (160.000 lux optional)
- exceptional duration with low consumptions (75 W)
- colour rendering index of 95 (CRI)
- IR-free light without heat
- ergonomics for an extraordinary simplicity of use and easy positioning for the medical team
- I-SENSE® revolutionary control system for a simple, fast and precise management

FOCUSED AND AMBIENT LIGHT

In order to achieve a correct illumination according to the different needs STARLED5 NX can produce a FOCUSED and AMBIENT light.

Thanks to its special optics realized by ACEM, the light field focusing system adjusts the light spot diameter accurately assuring an excellent sharpness of details in the operating area.



AMBIENT light is managed by the ENDO function. This technology consents a visual comfort as well as a correct vision of the surrounding environment thanks to its particular light beam coming from the upper part of the lamp. STARLED5 NX is particularly suitable for minimal-invasive surgery and is ideal for the preparation and treatment during the operation, monitoring of the patient and microscope operations.

STARLED5 NX

I-SENSE® CONTROL PANEL
FOR FUNCTIONS ADJUSTMENT

EASY MOVEMENT THANKS
TO THE LATERAL HANDLES

SUITABLE DESIGN FOR
LAMINAR FLOWS

COLD AND
SHADOWLESS LIGHT

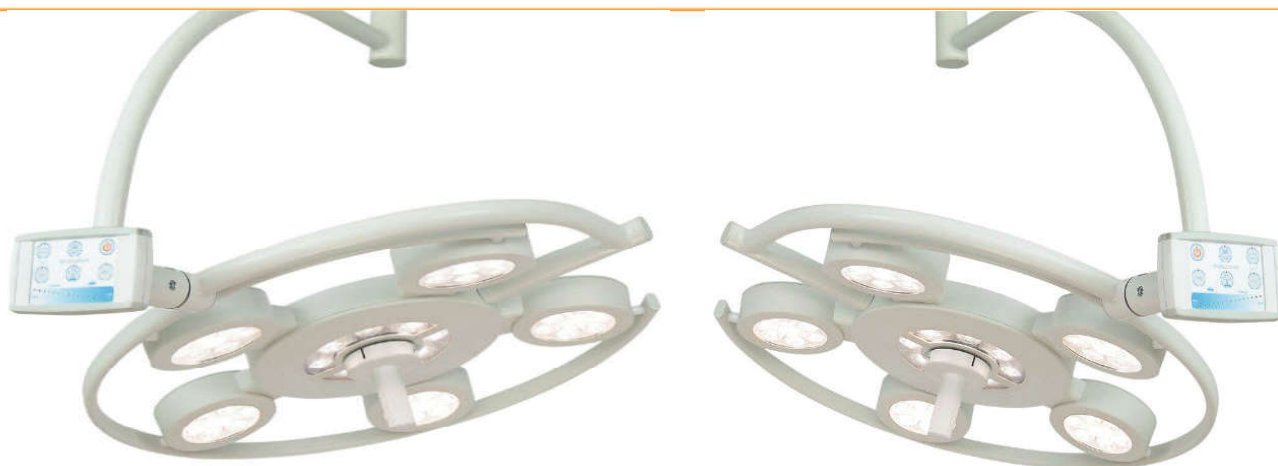
REMOVABLE AND
STERILIZABLE HANDLE

NEXT GENERATION LEDs
FOR EXCELLENT PERFORMANCES

All the functions of STARLED5 NX are managed by the handy, digital and easy-to-read I – SENSE® control panel positioned on the cardanic structure and adjusting:

- ON/OFF function
- Light intensity
- SIZE - Light spot diameter dimension (light beam focusing)
- ENDO - Light for endoscopy
- DOF - Depth of field – for a full visualization of the operating field
- SYNC - Mode (optional) to synchronize controls among the combined lamps: STARLED5 NX double (twin dome configuration) and STARLED5 NX with STARLED7 NX or STARLED3 NX. The SYNC mode grants simplicity of use saving time and giving the possibility of being managed by a single operator.





STARLED5 NX + STARLED5 NX

TECNICAL FEATURES STARLED 5NX

| | |
|---|--|
| Product Class (EN 60601-2-41) | I |
| Power supply | 100-240 VAC $\pm 10\%$ |
| Power consumption | 75 W |
| Frequency | 50/60 Hz |
| Light source | LEDs |
| Average life | 50.000 hrs about |
| Lighting at the centre, Ec @ 100 cm | 130.000 lux (160.000 lux optional) |
| Intensity adjustment | from 5% to 100% |
| Colour temperature, CCT | 4.500 °K |
| Variable colour temperature | from 3.700 °K to 4.700 °K continuous (optional) |
| Colour rendering index, Ra | 95 |
| Index R _a | > 90 |
| Chromaticity coordinates | x= 0.365 , y= 0.370 |
| Light field size | 24 - 33 cm |
| Focusable working distance | 70 - 150 cm |
| Lighting depth L1+L2 (20%) | 114 cm |
| Lighting depth L1+L2 (60%) | 64 cm |
| Dimensions, weights and further data | |
| Light head weight | 12 Kg |
| Light head diameter | 67 cm |
| Low ceiling height arm (LCH) | Optional |
| Handle | Removable and sterilizable |
| Colour | White RAL 9002 |

E. & O.E



ACEM SpA
Medical Company Division
Via della Tecnica 29 - 40050 Argelato
Bologna - ITALY
Ph +39 051 721844 Fax +39 051 721855
info@acem.it www.acem.it

Doc. STARLED5CVD/EN - 199 2013-01

In compliance with IEC 60601-2-41
Directive 93/42/EEC (medical devices)